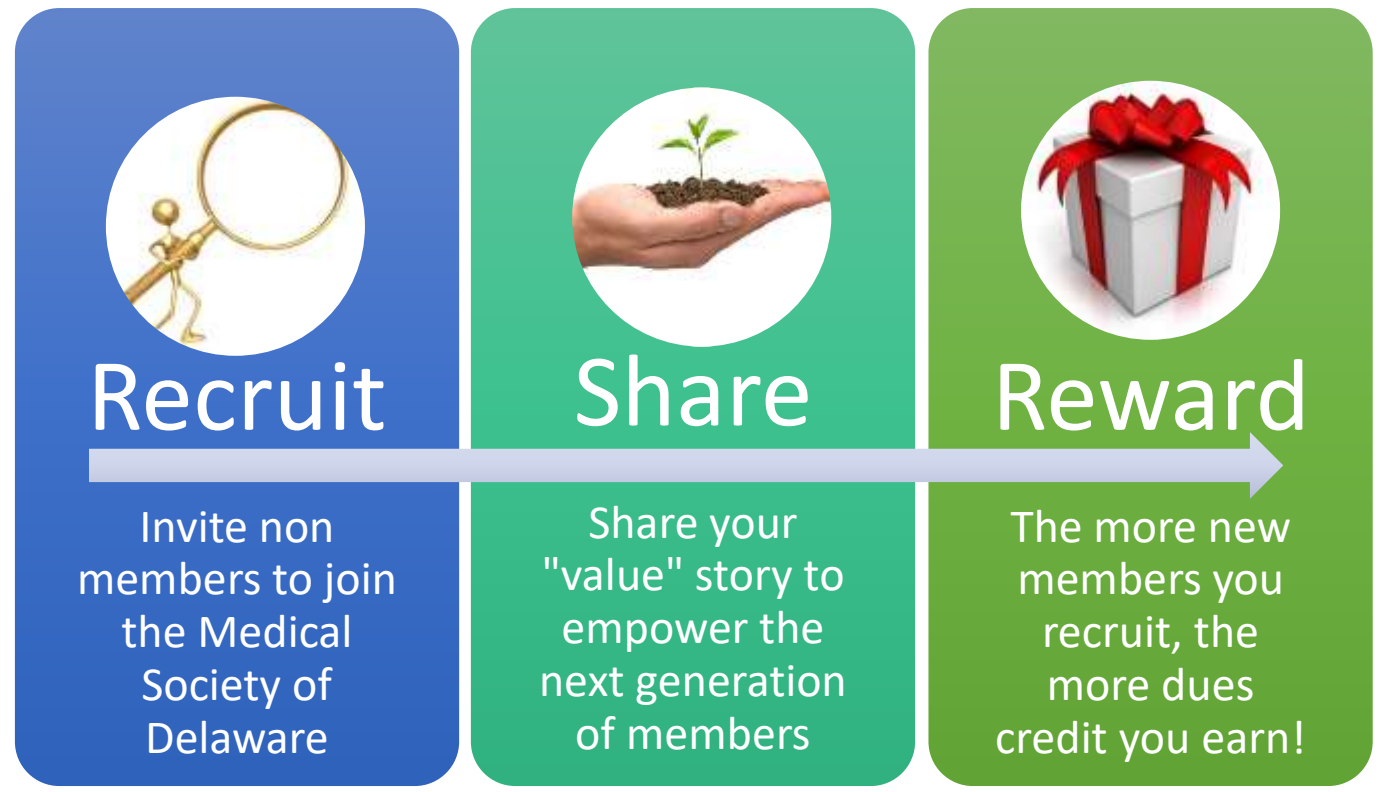


# BE REWARDED

Recruit eligible new members to join MSD and earn up to \$500\* in credit on your MSD dues in the following year!

*You know the value of membership in MSD ~ spread the word!*



**Are you eligible?** Current MSD physician members designated as *1<sup>st</sup> Year, 2<sup>nd</sup> Year, and 3<sup>rd</sup> Year in Practice, Full Dues Paying, and Associate members* are eligible to recruit and receive the dues credit.

**How is the credit applied?** The recruitment credit will be applied as follows:

- Recruitment of a 1<sup>st</sup>, 2<sup>nd</sup>, or 3<sup>rd</sup> Year in Practice Physician \$50/member
- Recruitment of a Full Dues Paying Physician \$100/member
- Recruitment of 5 Resident/Fellow/Student Members \$100 for 5 members
- Associate members who recruit eligible physicians \$50/member

\* The maximum credit provided to the recruiting physician is not to exceed the amount of their dues or a maximum of \$500, whichever is less.

\* Upon receipt of the credit, members are invited to donate all or part of the money to MSD, as a donation to the Delaware Medical Education Foundation (DMEF) or the Delaware Foundation for Medical Services (DFMS).